


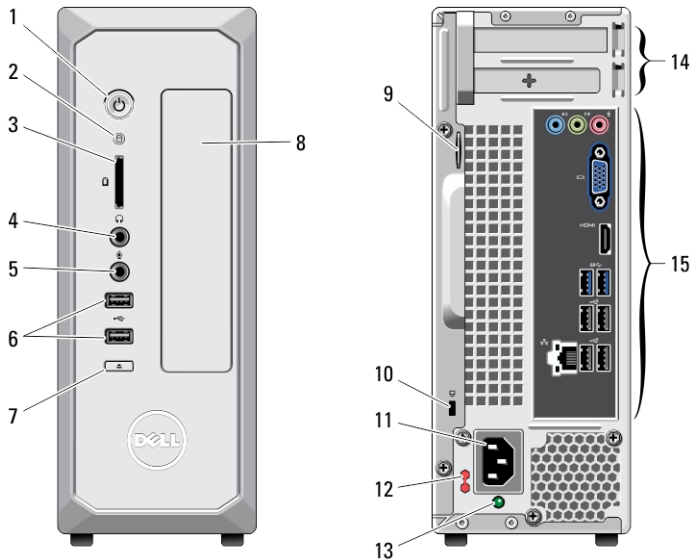
# Dell Vostro 270S

## Setup And Features Information

### About Warnings

 **WARNING:** A WARNING indicates a potential for property damage, personal injury, or death.

### Front And Back View



**Figure 1. Front And Back View**

- |                              |                               |
|------------------------------|-------------------------------|
| 1. power button              | 6. USB 2.0 connectors (2)     |
| 2. hard drive activity light | 7. optical drive eject button |
| 3. media card reader         | 8. optical drive              |
| 4. headphone connector       | 9. padlock ring               |
| 5. microphone connector      | 10. security cable slot       |

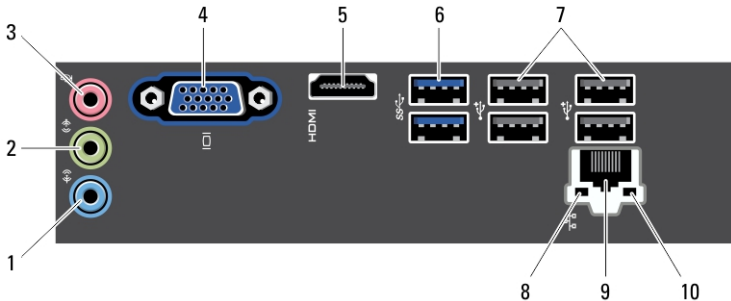


ONC88KA00

Regulatory Model: D06S  
Regulatory Type: D06S001  
2012 - 02

- 11. power connector
- 12. voltage selector switch
- 13. power supply diagnostic light
- 14. expansion card slots (2)
- 15. back panel connectors

## Back Panel



**Figure 2. Back Panel**

- 1. line-in connector
- 2. line-out connector
- 3. microphone connector
- 4. VGA connector
- 5. HDMI connector
- 6. USB 3.0 connectors (2)
- 7. USB 2.0 connectors (4)
- 8. network link integrity light
- 9. network adapter connector
- 10. network activity light

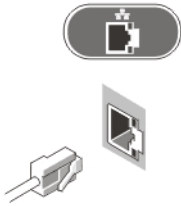
## Quick Setup

**⚠ WARNING:** Before you begin any of the procedures in this section, read the safety information that shipped with your computer. For additional best practices information, see [www.dell.com/regulatory\\_compliance](http://www.dell.com/regulatory_compliance)

**🔧 NOTE:** Some devices may not be included if you did not order them.

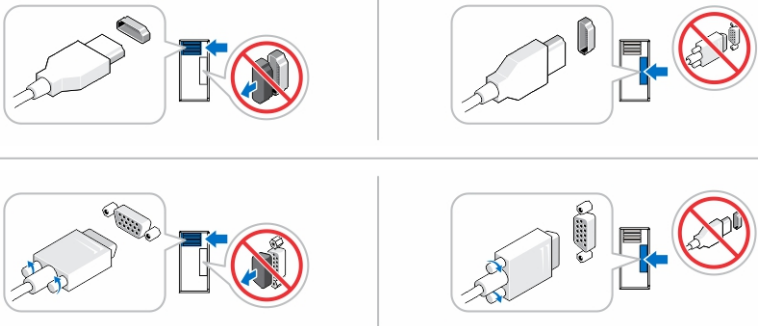
**🔧 NOTE:** Some cables may not be shipped with your computer.

1. Connect the network cable (optional).



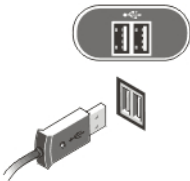
**Figure 3. Network Connection**

2. If you purchased the optional discrete graphics card, connect the display to the connector on the discrete graphics card. Otherwise, connect the display using either the integrated VGA or HDMI connector. Connect the monitor using only one of the following cables:



**Figure 4. VGA Connector And HDMI Connector**

3. Connect the USB keyboard or mouse (optional).



**Figure 5. USB Connection**

4. Connect the power cable(s).




**Figure 6. Connecting Power**

5. Press the power buttons on the monitor and the computer.



**Figure 7. Turning On Power**

## Specifications

 **NOTE:** The following specifications are only those required by law to ship with your computer. For a complete and current listing of the specifications for your computer, go to [support.dell.com](https://support.dell.com).

<b>Power</b>	
Wattage	220 W
Voltage (see the safety information that shipped with your computer for important voltage-setting information)	100 V - 127 V/ 200 V - 240 V
Coin-cell battery	3 V, CR2032 lithium coin cell

<b>Physical</b>	
Height	271.00 mm (10.67 inches)
Width	100.00 mm (3.94 inches)
Depth	376.20 mm (14.81 inches)
Weight	5.90 kg (13.01 lb)

---

## Environmental

---

Operating Temperature: 10 °C to 35 °C (50 °F to 95 °F)

## Finding More Information and Resources

See the safety and regulatory documents that shipped with your computer and the regulatory compliance website at [www.dell.com/regulatory\\_compliance](http://www.dell.com/regulatory_compliance) for more information on:

- Safety best practices
- Regulatory certification
- Ergonomics

See [www.dell.com](http://www.dell.com) for additional information on:

- Warranty
- Terms and Conditions (U.S. only)
- End User License Agreement

Additional information on your product is available at [support.dell.com/manuals](http://support.dell.com/manuals).

## Information para NOM (únicamente para México)

The following information is provided on the device described in this document in compliance with the requirements of the official Mexican standards (NOM).

Voltaje de alimentación	100 V CA – 127 V CA/ 200 V– 240 V CA
Frecuencia	50–60 Hz
Consumo eléctrico	6,00 A/3,00 A

**Information in this publication is subject to change without notice.**

© 2012 Dell Inc. All rights reserved.

Reproduction of these materials in any manner whatsoever without the written permission of Dell Inc. is strictly forbidden.

Trademarks used in this text: Dell™, the DELL logo, Dell Precision™, Precision ON™, ExpressCharge™, Latitude™, Latitude ON™, OptiPlex™, Vostro™, and Wi-Fi Catcher™ are trademarks of Dell Inc. Intel®, Pentium®, Xeon®, Core™, Atom™, Centrino®, and Celeron® are registered trademarks or trademarks of Intel Corporation in the U.S. and other countries. AMD® is a registered trademark and AMD Opteron™, AMD Phenom™, AMD Sempron™, AMD Athlon™,

ATI Radeon™, and ATI FirePro™ are trademarks of Advanced Micro Devices, Inc. Microsoft®, Windows®, MS-DOS®, Windows Vista®, the Windows Vista start button, and Office Outlook® are either trademarks or registered trademarks of Microsoft Corporation in the United States and/or other countries. Blu-ray Disc™ is a trademark owned by the Blu-ray Disc Association (BDA) and licensed for use on discs and players. The Bluetooth® word mark is a registered trademark and owned by the Bluetooth® SIG, Inc. and any use of such mark by Dell Inc. is under license. Wi-Fi® is a registered trademark of Wireless Ethernet Compatibility Alliance, Inc.

Other trademarks and trade names may be used in this publication to refer to either the entities claiming the marks and names or their products, Dell Inc. disclaims any proprietary interest in trademarks and trade names other than its own.